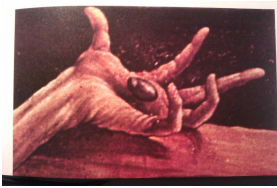


# 5 BILDER ÜBER DEN ISENHEIMER ALTAR

## von Meister Matthias Grünewald

Juan Eiras gewidmet

Andrés Fernández Rodríguez



I



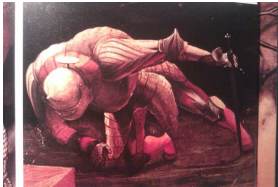
II



III



V



IV

Klar. B/Es

### I. Linke Hand Christi (eitrig, ♩ = 40)

⊕ = voller und gerader Klang, klare Artikulation (wie eine Orgel)

B Klar.

wenig rit. a tempo

fff p mp

9

mf pp ppp smorz.

### II. Johannes der Baptist (feierlich, ♩ = 70)

15

f sost. (f) mp

20 ein bisschen weniger bewegt p mp

24 simile rinforz.

28 tempo f voll

32 wenig rit. dim. p

**38** ein bisschen weniger bewegt kein rit.

*mf*

**III. Auferstandener Christus (ekstatisch, ♩ = 90)**

**46** Es Klar. rit. a tempo

*mf* ⊕ im ganzen Satz

**50** wenig rit. tempo

*mf* *p* *mp* *p*

**56**

*mp* *mf*

**61** wenig rit. a tempo

*mp* *mf*

*klar, organisch  
dunkel Klangfarbe bis zum Satzende*

**66**

**70**

**74**

*p subito* *leicht*

**78**

*immer cresc.*

**82**

86

90

94

*f immer cresc.*

98

101

*kein rit.*

*ff*

**IV. Soldat zu Christi Füßen (edel, ♩ = 60)**

105

B Klar.

*mp* *mf*

111

*mf*

121

*almählig mehr und mehr aschfahl* *dim.* *mp*

*rit.*

**V. Die Versuchungen des heiligen Antonius (lyrisch, ♩ = 90)**

126

(♩+♩+♩.)

*mp*

130

(♩+♩.)

*mf* *p*

134

Musical notation for measure 134, featuring a treble clef, a key signature of one sharp (F#), and a 5/4 time signature. The melody consists of eighth notes. The dynamic marking is *mp*.

138

Musical notation for measure 138, featuring a treble clef, a key signature of one sharp (F#), and a 3/4 time signature. The melody includes a triplet of eighth notes and a sextuplet of eighth notes. The dynamic marking is *f* *mechanisch*.

141

Musical notation for measure 141, featuring a treble clef, a key signature of one sharp (F#), and a 3/4 time signature. The melody consists of eighth notes with accents (^).

146

Musical notation for measure 146, featuring a treble clef, a key signature of one sharp (F#), and a 3/4 time signature. The melody consists of eighth notes with accents (^). An *ACCEL.* marking is present above the staff. The dynamic marking is *f* *lyrisch*.

150

Musical notation for measure 150, featuring a treble clef, a key signature of one sharp (F#), and a 3/4 time signature. The melody consists of eighth notes with accents (^).

153

Musical notation for measure 153, featuring a treble clef, a key signature of one sharp (F#), and a 3/4 time signature. The melody consists of eighth notes with accents (^).

156

Musical notation for measure 156, featuring a treble clef, a key signature of one sharp (F#), and a 3/4 time signature. The melody consists of eighth notes with accents (^). A tempo marking  $(♩ = ♩)$  is present at the beginning.

159 **Lebendig, ♩ = 110**

Musical notation for measure 159, featuring a treble clef, a key signature of one sharp (F#), and a 3/4 time signature. The melody consists of eighth notes with accents (^). An *ACCEL.* marking is present above the staff. The dynamic markings are *f* *mechanisch*, *ff*, *f*, and *ff*.

163

Musical notation for measure 163, featuring a treble clef, a key signature of one sharp (F#), and a 3/4 time signature. The melody consists of eighth notes with accents (^). The dynamic marking is *f* and *wenig cresc.*

166

Musical notation for measure 166, featuring a treble clef, a key signature of one sharp (F#), and a 4/4 time signature. The melody consists of eighth notes with accents (^). A tempo marking **Eitrig, ♩ = 40** is present above the staff. The dynamic markings are *f+*, *fff subito*, *smorz. pp*, and *ppp*.