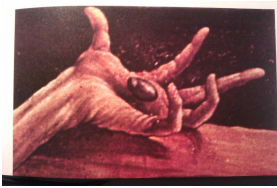


5 BILDER ÜBER DEN ISENHEIMER ALTAR

von Meister Matthias Grünewald

Juan Eiras gewidmet

Andrés Fernández Rodríguez



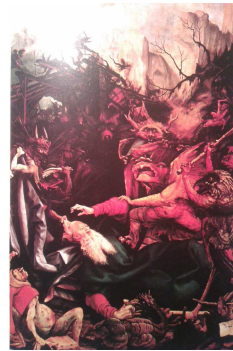
I



II



III



V



IV

Flöte/Kleine Flöte

⊕ = voller und gerader Klang, klare Artikulation (wie eine Orgel)

I. Linke Hand Christi (eitrig, ♩ = 40)

Kleine Flöte

Flöte

fff \oplus *mf*

7

11

pp *ppp* *smorz.* whistle ca. (30%)

II. Johannes der Baptist (feierlich, ♩ = 70)

15

mf *f* *sost.* *f*

19

mp **ein bisschen weniger bewegt** 3

25

mf *f* *voll* **rinforz.** **tempo**

29

mf

33

dim. *p* **wenig rit.**

5 BILDER ÜBER DEN ISENHEIMER ALTAR - Flöte/Kleine Flöte

ein bisschen weniger bewegt

38

Musical notation for measure 38, starting with a fermata over a whole note. The tempo marking is *mf*. A circled instruction *kein rit.* is placed above the staff.

III. Auferstandener Christus (ekstatisch, ♩ = 90)

46

Musical notation for measure 46, featuring a melodic line with a fermata. The tempo marking is *mf*. A circled instruction *rit.* is placed above the staff, and another circled instruction *a tempo* is placed below the staff.

50

Musical notation for measure 50, showing a melodic line with a fermata. The tempo marking is *mf*. A circled instruction *wenig rit.* is placed above the staff, and another circled instruction *tempo* is placed below the staff.

56

Musical notation for measure 56, starting with a fermata over a whole note. The tempo marking is *mf*.

62

Musical notation for measure 62, featuring a melodic line with a fermata. The tempo marking is *mf*. A circled instruction *wenig rit.* is placed above the staff, and another circled instruction *a tempo* is placed below the staff. The instruction *klar, organisch* is written below the staff.

66

Musical notation for measure 66, showing a melodic line with a fermata.

69

Musical notation for measure 69, showing a melodic line with a fermata.

72

Musical notation for measure 72, showing a melodic line with a fermata. The instruction *p subito leicht* is written below the staff.

76

Musical notation for measure 76, showing a melodic line with a fermata.

80

Musical notation for measure 80, showing a melodic line with a fermata. The instruction *immer cresc.* is written below the staff.

5 BILDER ÜBER DEN ISENHEIMER ALTAR - Flöte/Kleine

Flöte

83

87

91

95

f immer cresc.

98

101

kein rit.

ff

IV. Soldat zu Christi Füßen (edel, ♩ = 60)

105

mp

112

mp

116

kein rit.

mf

121

rit.

allmählig mehr und mehr aschfahl

dim.

mp

V. Die Versuchungen des heiligen Antonius (lyrisch, ♩ = 90)

126

(♩+♩+♩.)

Kleine Flöte

mp

5 BILDER ÜBER DEN ISENHEIMER ALTAR - Flöte/Kleine
Flöte

131 (♩+♩.)

mf

133

p mp

138

f mechanisch

141

145

ACCEL.
149

f lyrisch

153

156 (♩=♩.)

159 Lebendig, ♩ = 110
ACCEL.

f mechanisch f f

164

wenig cresc. f+ fff subito

169 Eitrig, ♩ = 40

smorz. pp ppp